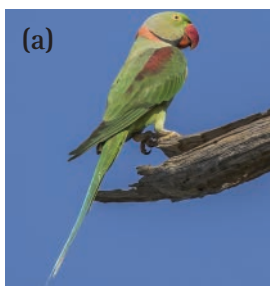


KRISHNAN'S CAST

We meet some of M Krishnan's most interesting neighbours in his piece titled 'Voices of Intolerance'. His writing brought them to life. It is as if they left a bit (or a lot) of themselves in our imagination and on this page. Do you recognise which of these belong to his cast of characters?



(a)



(b)



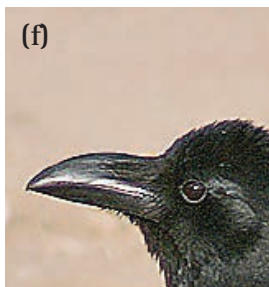
(c)



(d)



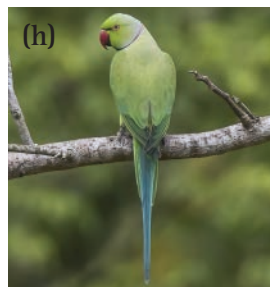
(e)



(f)



(g)



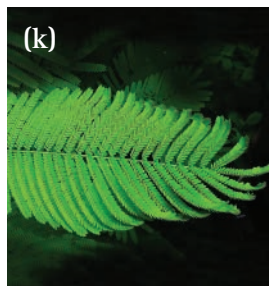
(h)



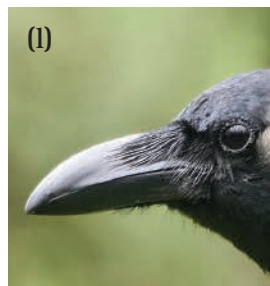
(i)



(j)



(k)



(l)

Notes:

1. To read M Krishnan's piece titled 'Voices of Intolerance', turn to page 19 of this issue.
2. To read more about M Krishnan, check out his Biography titled 'Nature's Passionate and Meticulous Chronicler' by Varun Sharma on page 4 of this issue.
3. If you have finished and would like to check your answers, please turn to page 48 of this issue.
4. Source of the image used in the background of the article title: Jigsaw pieces. Credits: Wounds_and_Cracks, Pixabay. URL: <https://pixabay.com/photos/puzzle-piece-tile-jig-jigsaw-game-3306859/>. License: CC0.

Chitra Ravi works at Azim Premji University, Bangalore.