

# INTERNATIONAL DAY OF THE WORLD'S INDIGENOUS PEOPLES

## August 2023 Edition

---

### FEATURE ARTICLE

A Dollop Full Of Honey  
Vanishing Voices

---

### JUNGLE GRAPHIC

Sanjay Gandhi National Park, Maharashtra

---

### FOREST FACTS

5 Indigenous Women or Groups Playing a Role in the  
Preservation and Transmission of Traditional Knowledge

Tales of the Jungle: An Attempt to Integrate Art and  
Science

---

### VIDEO

Interaction with Ruchi Badola, Registrar,  
Wildlife Institute of India



## August Newsletter



## Sanjay Gandhi National Park, Maharashtra

**Mumbai, Maharashtra**  
An area of over 103.84 square kilometres



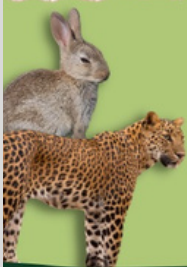
### About The Park

- Largest park in the world located within city limits
- Termed as the lungs of Mumbai city
- Home to 1795 Adivasi families and other forest dwellers
- Was originally named as Borivli National Park

### MAJOR ANIMAL SPECIES

The park provides habitat to many species like

- Leopard
- Spotted Deer
- Sambar
- Black-naped Hare
- Crocodile



### MAJOR BIRD SPECIES

The National Park is a bird watchers' paradise with birds like

- Tickell's Flowerpecker
- White-bellied Sea Eagle
- Kingfisher
- Paradise Flycatcher



### BEST TIME TO VISIT

The months of July to mid-October are rainy months when dense trees in the forest appear the best. However, August to November is the best time to spot butterflies.

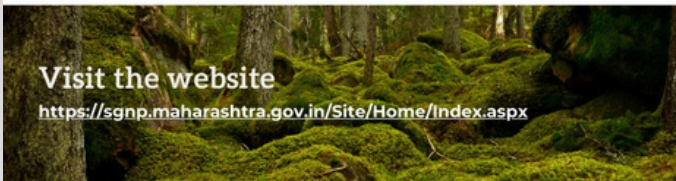


### NEAREST AIRPORT

Chhatrapati Shivaji Maharaj International Airport in Mumbai is the nearest airport to the National Park, and is just 16 km away.

### Visit the website

<https://sgnp.maharashtra.gov.in/Site/Home/Index.aspx>



[View here >>](#)



### Video: Interaction with Ruchi Badola, Registrar, Wildlife Institute of India

As part of the Guardians of the Forest Series, Ruchi Badola talks about the need to save forests and the role they play in our lives.

[Click here >>](#)

**FORESTS  
of LIFE**

**Azim Premji  
University**

## Jungle Act Works

We invite you to showcase your artistic talent on Adivasis across the country.

**Suggested themes: Their livelihoods, cultures, traditions, art forms, myths, beliefs, issues, spiritual connection with forests, forest produce**

Thank you for the overwhelming response for the previous editions. We will be showcasing a selected set of images from each institution. Your understanding and cooperation are greatly appreciated.

[Submit here >>](#)



## Indigenous Peoples Crossword

**Across**

- 3. Northeast Indian community known for crafting handmade "Naga shawls" with unique traditional designs
- 5. Indigenous people in Himachal Pradesh who use wooden block printing to make intricate and vibrant fabric patterns
- 7. Rajasthani indigenous group which creates the folk epic "Pabuji Ki Phad," a traditional form of storytelling through painting
- 8. Indigenous group in Central India known for vibrant and distinctive intricate tattoo art as a vital cultural identity

**Down**

- 1. Traditional South Indian art form with hand-painting or block-printing on textiles and intricate designs depicting mythological themes and nature scenes
- 2. The country that is home to the largest population of indigenous people
- 4. A state home to many indigenous adivasi groups and the renowned "Bandipur National Park"
- 6. \_\_\_\_ part of India is inhabited by "Gond" adivasi known for rich cultural heritage and traditional art

[View Answers >>](#)

## Matching Game

Bhil	Community primarily inhabits the states of Jharkhand, West Bengal, Odisha, and Bihar. They have a distinct language, culture, and traditional music
Mizo	Which international organisation works to promote the rights and well-being of indigenous people?
Cholanaikkans	One of the largest adivasi communities in India, reside mainly in the central and western parts of the country and are known for their expertise in agriculture and artistry
UNESCO	Community predominant in the central and southern regions of India, particularly in the states of Madhya Pradesh, Chhattisgarh, and Maharashtra. They have a rich cultural heritage and are skilled farmers and hunters
Gond	Indigenous people in Nilgiris identified by their distinctive hand prepared shawls
Toda	One of the last remaining hunter-gatherer adivasi groups in the country
Santhal	Known for their rich culture, vibrant festivals, and traditional bamboo dance

[View Answers >>](#)



## Tales of the Jungle: An Attempt to Integrate Art and Science

**Authors: Tamralipta Patra and Tara Kiran Kurre**



### Semi Arid Region using Kalamkari (originated in Kalahasti and Masulipatnam)

The semi-arid region of North-West India with an average rainfall of 400 to 1000 mm extends into Gujarat, Punjab, and Rajasthan. Flora such as *Buchania lanzan*, *Diospyros melanoxylon*, *Mitragyna parvifolia*, *Cassia fistula*, *Schrebera swietenoides* and *Pterocarpus marsupium* are found here along with several endangered fauna. The key conflict in this area is drought and rampant deforestation.



### Arid Region using Patua Folk Art Style

Patua is a folk art native to the states of West Bengal, Bihar, Jharkhand and Odisha. The depicted flora includes Gum Acacia, Khejri and various forms of cacti and shrubbery. Depicted fauna includes Camel, Saw-scaled Viper, Asiatic wild cat, Chinkara, the Great Indian Bustard and the Indian Gray Wolf.

The art work documents the Khejarli massacre and Amrita Devi's principal role in the struggle to save the Khejri tree. There is also a depiction of a shelter provided for stray animals in accordance with the 22nd commandment - "अमर रखावै थाट" (To provide a common shelter (Thhat) for animals to avoid them being slaughtered.)



Western Ghats are a biodiversity hotspot and a UNESCO world heritage site, with many endangered species of flora and fauna. The painting depicts threatened fauna like Tigers, Lion-tailed Macaques, Nilgiri Tahr, Asian Elephants, Gaurs, etc. It also depicts a critically endangered tree locally known as "Dhuma" and *Echinops sahyadricus*.

Western Ghat using Warli folk painting style.



Covering the entirety of the southern peninsula of India, south of the Narmada River and marked centrally by a high triangular tableland, Deccan plateau derives its name from Sanskrit word of dakshina ("south"). Cheriyal paintings, famous for their depictions of Hindu mythological figures and folktales are painted here. Cheriyal scroll painting is unique due to its use of bold lines, vibrant colors, and meticulous attention to detail.

Deccan Plateau using Cheriyal folk painting style.



## Showcasing the Jungle Activity artworks submitted by the students across the country

### GSSS, Kadamtala, Middle Andaman, Andaman & Nicobar Islands



#### Warren Academy, Jaipur, Rajasthan



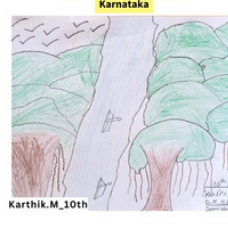
#### Sohan Lal Manihar School, Jodhpur, Rajasthan



#### Gurukripa Institute, Sikar, Rajasthan



#### GMMHS, Dommasandra, Karnataka



#### Our Lady Pillar, Convent School, Jodhpur, Rajasthan



#### J Jeya Matriculation Higher Secondary School, Tamil Nadu



#### Aritram Waldorf, Noida, Uttar Pradesh



#### GMPBS, Dommasandra, Karnataka



#### Chinmaya Vidyalaya Pallavur, Kerala



#### GMPBS, Dommasandra, Karnataka



#### St. Xavier's School, Jaipur, Rajasthan



#### Lucknow Public School, Lucknow



#### Mahatma Vidyalaya, Muthanalur Cross, Karnataka



#### Narayan school, Karnataka



#### Nehru Matriculation School, Tamil Nadu



#### Nazareth School, Manjeri, Kerala





### GHPGS, Dommasandra, Karnataka



Siddharth\_M\_7th



Nikhil Yadav\_3rd



Navneet\_M\_3rd

### Global Indian International School, Karnataka



Sreeya\_S.Nair\_9th

### Prakriya Green Wisdom School, Karnataka



S.Mathivashani\_10th

### Government Lower Primary School Yamare, Karnataka



Bhoomika\_5th



Sathya\_5th



Ashvini\_K\_5th



Bhoomshankar\_4th



Komal\_5th



Ranjeeta\_4th



Sultana\_5th

### Community Learning Center, Azim Premji University



Manu\_8th



Ranjan\_2nd



Ithrisa\_5th



Preeti\_1st



Amit\_4th

### Army Public School, Dhaura Kuan, New Delhi



Anushka Bhardwaj\_10th



Manasi\_11th



Pawandeep Singh\_8th



Suparna Roy\_11th C



Preeti Rathor\_11th

### Army Public School, Hisar, Haryana

### B. P. Pujari G.E.M. Utkrisht Vidyalaya, Raipur



Kadra Baghel

### Desales Academy, Chandapura, Karnataka



Sanjeev Jayanthan 2nd



Sanjeev Jayanthan 2nd

### Army Public School, Hisar, Haryana



Anushka Bhardwaj\_10th



Manasi\_11th

### Sunbeam School Lahartara, Varanasi, Uttar Pradesh



Armaan Ahmad\_11th



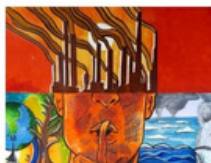
Riya Maurya\_10th



Manvi Srivastava\_6th



Rudra Singh\_9th



Avishi Chaubey\_10th



Vishesha Khanna\_12th



Mugdha Jain\_10th



Samridhi Rastogi\_11th



Ismle\_1st



Divya Shah\_8th



Pragati Modi\_11th



Shriyath Niranjan



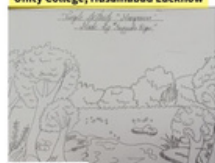
Md.Zaid\_11th



Jatin Arun\_10th



Rakshit Parasramka\_12th



Sayyada Razvi\_10th



Punnyodai Sinha\_11th



Krishna Singh\_12th



Riya Maurya\_10th



Syed Wali Husain\_6th

### Treamis World School, Karnataka



Shriyath Niranjan

### Unity College, Husainabad Lucknow



Sayyada Razvi\_10th



## Star Public School Lumshnong, Meghalaya



Ankan Debnath  
Class- V, B



Susmita Rani Das  
Class- VII



Madhurima Das  
Class- VII



Merugu Khushi  
Class- V, A



Paridhi Singh  
Class- V, A



Shreeja Dutta  
Class- VII



Susmita Chanda  
Class- VII



Ayush Mishra  
Class- IX



Himanshu Tiwari  
Class- V, A



Ritu Das  
Class- XI



Annanya  
Class- VII



Rahul Maity  
Class- V, B



Aniket Sen  
Class- V, A



Akanksha Patel  
Class- V, A

## Government Lower Primary School Yamare, Karnataka



Nikita\_4th



Fakirappa\_4th



Sanghmesh\_4th

## G.P.H.S Handenahalli, Karnataka



[Click here >>](#)

For any queries, please write to [forestsoflife@apu.edu.in](mailto:forestsoflife@apu.edu.in) and click below to get regular updates about the festival!

[Click here to view our previous edition >>](#)

To receive a regular newsletter or notification about upcoming events, please signup in the form in the link!

[Click here >>](#)