

Children with Disabilities in India

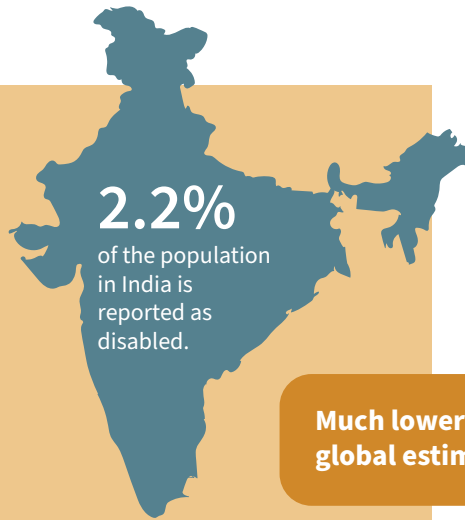
From Early Detection to Schooling and Literacy (based on NSSO data)

Extent of disability



1 in 10
children

(≈240 million) live with disabilities globally



Much lower than global estimates.

Why the gap?

This gap likely reflects undercounting, under-detection, stigma, and narrower definitions, rather than fewer children with disabilities. Such underestimation has serious implications for education planning.

Why it matters?

Undercounting affects education planning.

Better detection can come from:

- School enrolment drives
- Regular health screenings
- Linking survey data with school records (to spot children at risk, track enrolment, and catch dropouts early)



Early intervention



1 in 10

children with disabilities in India get early support (therapy or preschool help).



Initial onset of disability cases is most frequently reported in early childhood.

0–4 years 13.7%

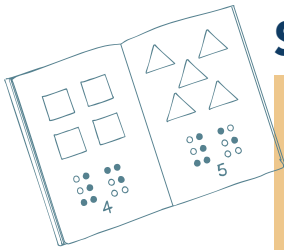
5–14 years 9.2%



Anganwadis can play a key role in spotting delays and referring children to therapy.

Strengthening Anganwadis with training, screening, and inclusive methods is more impactful than piecemeal interventions.





Schooling pathways

62.9%
children with disabilities
have never enrolled in
regular schools.

37.1%
children with disabilities
have been enrolled in
regular schools.



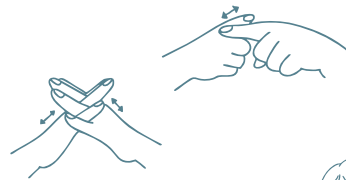
Just **4.1%** ever enrolled in special schools

fewer than **2%** still attend.

Improving schooling outcomes will require additional support for resource teachers, assistive devices, and inclusive classrooms under the Samagra Shiksha.

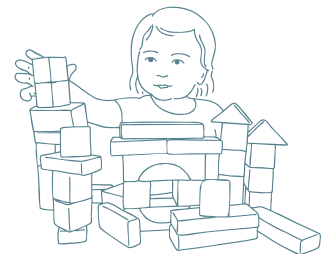
Literacy

Literacy in Persons with disabilities (7+ years):

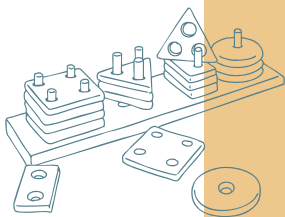


only 51% literate

To bridge this gap, measures such as scholarships, safe transport, and incentives for girls with disabilities are essential.



Barriers to education

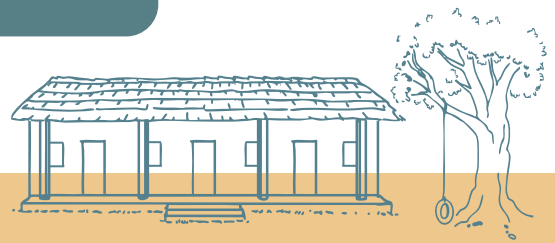


Limited support:

21.8% received help from government

1.8% from other organisations

76.4% got no help at all



Only **28.8%** have a disability certificate, without it, access to schemes and entitlements is blocked.

Why children don't attend school?

- Distance to school
- High out-of-pocket costs
- Disability-related challenges

To bridge this gap, measures such as scholarships, providing UDID certificates, safe transport, and incentives for girls with disabilities are essential.